

# FLORA FAIRBAIRN AND CO.

PRESS RELEASE

SUMMER 2022

---

Kieran Stiles: Artist in Residence, **on form** 2022

An exhibition of new works, curated by Flora Fairbairn

30 September - 20 October 2022

Asthall Manor, Oxfordshire OX18 4HW



*Willow, 2022, Oil on panel*

Flora Fairbairn & Co. are thrilled to present an exhibition of new works by Kieran Stiles, created during his time as Artist in Residence at **on form** 2022, the UK's largest sculpture exhibition in stone. Stiles' exhibition runs from 30 September - 20 October 2022 in the ballroom at Asthall Manor, near Burford in Oxfordshire. This body of works represents the culmination of Stiles' residency, which began in the spring and consists of paintings and drawings created in response to the **on form** sculpture exhibition and the exquisite surroundings of Asthall Manor's garden.

As an outdoor exhibition, **on form** lent itself well to Stiles' signature habit of painting *en plein air*. He made studies of the sculptures and gardens which inspired the drawings and paintings presented in the exhibition.

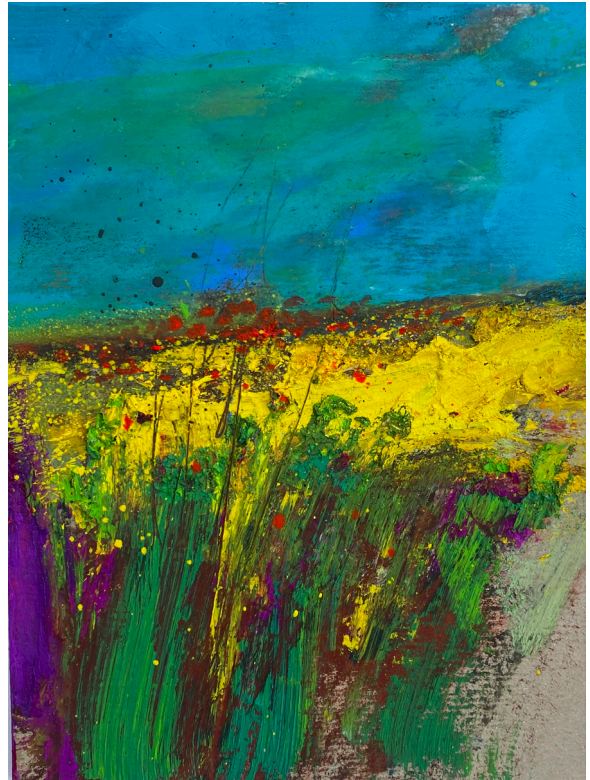
Each of Stiles' paintings is a unique expression of a particular time and place. Layers of oil paint are superimposed with fractured marks, dashes and splatters

*'His work is close up, intimate, intense, and compelling'*

- Mick Rooney RA

that capture the spirit of a continually changing landscape. The resulting images are evocative, full of vitality, and fizzing with life and electric colour.

Mick Rooney RA, says of Stiles's work: *'Stiles' work is close up, intimate, intense, and compelling. So much of his visual exploration is about the boundless dappling of light, slowly captured and distributed amongst a precious coppice of trees and foliage. He jumps right in among it to find extraordinary scrapings, patterns and textures beyond the mere surface, knowing exactly how to select his landscape and to concentrate on - and almost scour out - his block of visual reality.'*



*Colour Field, 2022, oil on panel*

Stiles has taught painting workshops at Asthall Manor for some years as part of his independent art school, Art Courses Oxford. As part of his exhibition, Stiles will bring these teaching skills back to the ballroom with a series of tutored classes providing creative and inspiring ways of connecting with the sculptures and gardens. He also lectures at The Ashmolean Museum, Oxford, in connection with their major exhibitions, and in 2019 was Visiting Research Fellow in the Arts at Merton College, Oxford, where his exhibition, *Lightscape* - also curated by Flora Fairbairn - was listed as a Top Pick in the Saturday Times by Rachel Campbell-Johnston.

## NOTES TO EDITORS

---

KIERAN STILES: ARTIST IN RESIDENCE, **on form** 2022

An exhibition of new paintings, drawings and video created in response to **on form** 2022 at Asthall Manor.

Curated by Flora Fairbairn.

EXHIBITION DATES: 30 September - 20 October 2022

OPENING HOURS: Fri - Sun, 11am - 5pm / and by appointment  
PRIVATE VIEW: Thursday 29 September, 6.00 - 8.00pm  
RSVP via: [artsvp.co/eff900](https://artsvp.co/eff900)  
LOCATION: The Ballroom, Asthall Manor, Asthall, OX18 4HW

#### ART WORKSHOPS

There will be a series of tutored classes providing creative and inspiring ways of connecting with the sculptures and gardens.

**[www.kieranstiles.com](http://www.kieranstiles.com)**

#### ABOUT KIERAN STILES

---

Kieran Stiles, b. 1970, Guildford, is a contemporary painter based in Oxfordshire. His work often starts in the landscapes of Cornwall, where he originally trained, studying Fine Art at Falmouth. These works are then developed and refined over subsequent weeks in his Oxford studio. As Kieran puts it: *"Colour is exciting and experimenting with it can provoke all kinds of questions. Life is abstract and vision can be beyond conventional realism. This way of working allows me to paint what I feel and imagine, not what I know."*

Kieran also lectures at The Ashmolean Museum, Oxford, in connection with their major exhibitions, and in 2019 was Visiting Research Fellow in the Arts at Merton College, Oxford, where his exhibition, *Lightscape*, curated by Flora Fairbairn, was listed as a Top Pick in the Saturday Times by Rachel Campbell-Johnston. As part of this research fellowship, he explored the links between psychological wellbeing and creativity. Stiles also founded Oxford's independent art school, Art Courses Oxford, which specialises in developing innovative and assessable ways in which people can explore art and their own creativity.

His work is held in many influential and distinguished collections internationally.

W: **[www.kieranstiles.com](http://www.kieranstiles.com)**

E: **[kieran@kieranstiles.com](mailto:kieran@kieranstiles.com)**

IG: **[@kieranstiles](https://www.instagram.com/kieranstiles)**

## ABOUT FLORA FAIRBAIRN & CO.

---

With a background in History of Art, Architecture and Fine Art, Flora Fairbairn has been curating exhibitions and building art collections since 2000, following a career in architecture and property development.

She has produced exhibitions and art installations in a wide array of mostly architecturally interesting locations, in collaboration with collectors, architects, developers and landowners. Projects include exhibitions in the underbelly of the courtyard of Somerset House; a rum factory in Havana; a disused church in Venice and the Fish and Coal building in Kings Cross - loaned to her by the Argent Group, for whom she sat on the art advisory board.

Flora's huge array of collaborations with artists have provided her with an unparalleled advisory service building sensitively curated art collections. She has extensive access to artists and galleries and projects of note include a pop-up gallery space within the ground floor of Selfridges and more recently a group exhibition in a double fronted two-storey building on Chiltern Street loaned by The Portman Estate.

W: [www.florafairbairn.com](http://www.florafairbairn.com)

E: [everyone@florafairbairn.com](mailto:everyone@florafairbairn.com)

T: +44 (0)7971 572 105

IG: [@florafairbairn](https://www.instagram.com/florafairbairn)

## ABOUT **on form**

---

Born in 2000, **on form** is the UK's largest exhibition of sculpture in stone, set within the bold and luscious garden and some of the interior spaces of Asthall Manor, including its Arts & Crafts ballroom. The exhibition is loved for its "please **do** touch" policy and its inclusive and conversational ethos. **on form** is a signatory to [Culture Declares](#).

W: [www.onformsculpture.co.uk](http://www.onformsculpture.co.uk)

E: [info@onformsculpture.co.uk](mailto:info@onformsculpture.co.uk)

IG: [@on\\_form\\_sculpture](https://www.instagram.com/on_form_sculpture)

**FLORA**  
**FAIRBAIRN**  
**AND CO.**